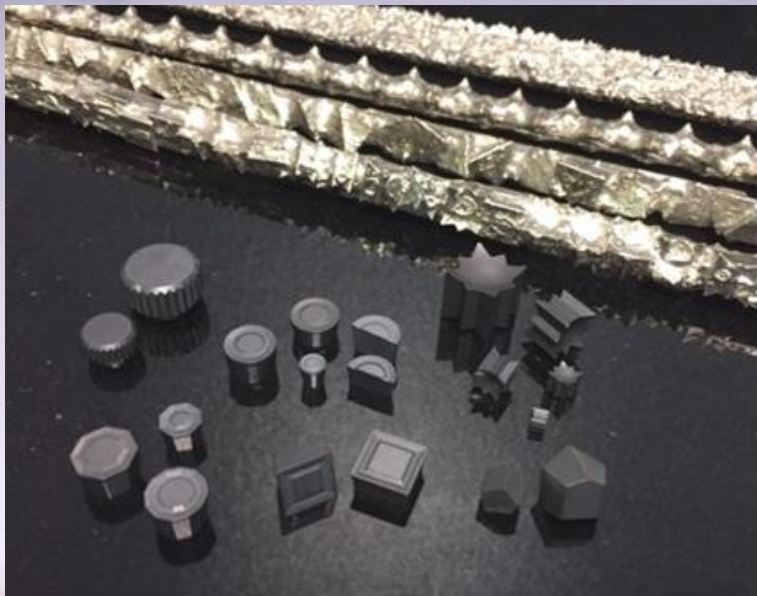
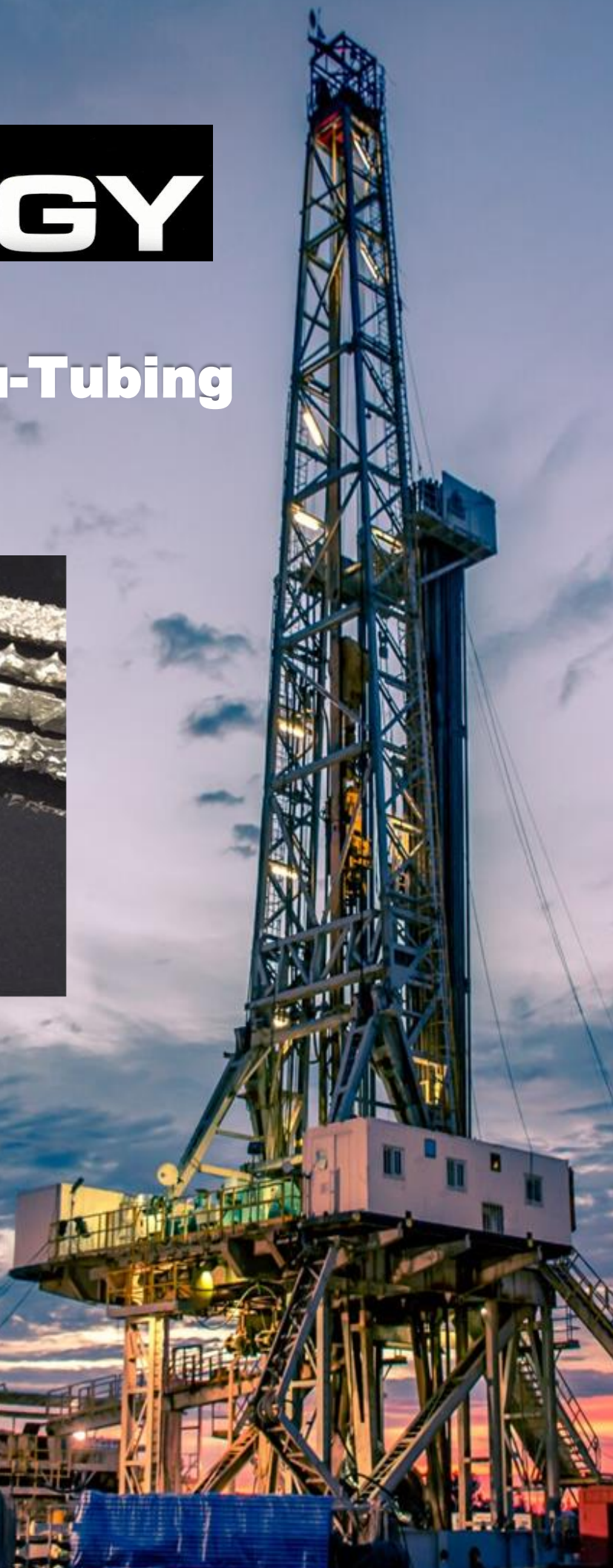




# Fishing and Thru-Tubing Products



12900 Preston Road, Suite 620  
Dallas, Texas U.S.A. 75230  
(281) 734-1746 • (281) 734-1839  
[www.ameriservsupply.com](http://www.ameriservsupply.com)



## Our Story

**For over 30 years,** the professionals at AmeriServ Supply have been providing quality products and memorable customer experiences. And now, they proudly offer the Synergy Carbide™ brand of hardfacing and drilling products for the energy industry.



Available exclusively through AmeriServ Supply, the broad offering includes engineered inserts, like the original Starbide™ and the patented Pentacut™, which have become the standards for increased productivity through lower failure rates and maximum uptime, as well as all the industry-recognized shapes. CrushCut™ crushed carbide composite rods and grit are available in a range of sizes, along with flux and tinning rod for your welding applications. And a selection of gage and wear protection compacts, stabilizers, and tiles completes the offering.

## At Your Service

**More than just another carbide distributor.** As a distributor, AmeriServ Supply offers a broad array of carbide products from a host of domestic and global manufacturers, ensuring the most economical, highest quality products available. But we are also a manufacturer with full design capability, comprehensive process knowledge, and decades of metallurgical expertise. From legacy items abandoned by other manufacturers to your latest idea, we can help.

We are committed to providing exceptional customer care. Our friendly and experienced team is available 24/7 for service and technical support. Whether it's product selection, process optimization, or troubleshooting, our 30 years of manufacturing expertise and industry knowledge are at your service.

## Recycling Has Never Been Easier

**Our sustainability initiative** allows our customers to become part of the effort by recycling scrap tungsten carbide materials. Our sister company, Tungsten Carbide Recycling LLC, arranges freight, sorts and weighs your material, and provides detailed settlement reports along with prompt payment.

It couldn't be easier to do your part to preserve and protect our environment. Visit [www.tungstencarbiderecycling.com](http://www.tungstencarbiderecycling.com) for more information.



HARDFACING PRODUCTS cutting inserts	Part Number	Dimensions (inches)			Model
		Diameter / Width	Thick. / Height	Length	
The Original <b>Starbide™</b>	STARBIDE316	3/16	3/16	-	
	STARBIDE14	1/4	1/4	-	
	STARBIDE516	5/16	5/16	-	
	STARBIDE38	3/8	3/8	-	
	STARBIDE12	1/2	1/2	-	
Patented <b>Pentacut™</b>	PENTACUT3/8	3/8	3/8	3/8	
<b>Raptor™</b> 	RAPTOR3/8	.370	.413	.360	
<b>Talon™</b> 	TALON3/8	.371	.416	.325	
<b>Wave™</b> 	M17827	1/4	5/16	5/16	
	M17823	1/4	5/16	5/8	
	M17818	1/4	5/16	1	
<b>Round</b>	RCUR1.83	3/16	3/16	-	
	RCUR2.93	3/8	3/16	-	
	RCUR34	3/8	1/4	-	
<b>Half Round</b>	RCUR1.47	3/8	3/16	3/16	
	RCUR1.55	3/8	1/4	3/16	
<b>8-Sided</b>	OCUR230	1/4	3/16	-	
	OCUR340	3/8	1/4	-	
<b>Half 8-Sided</b>	OCUR340HALF	3/8	1/4	3/16	
<b>12-Sided</b>	M17466	3/8	1/4	-	
<b>Square</b>	D0006	3/8	3/16	-	
	SDUR2.940	3/8	1/4	-	
	M17802	3/8	1/4	-	
	M17831-1	3/8	1/4	-	
<b>Half Square</b>	D0006HALF	3/8	3/16	3/16	
<b>Rectangle</b> 	M17801	3/8	1/4	1/2	
	M17831	3/8	1/4	1/2	
	M19018	3/8	1/4	1/2	
	M19019	3/8	1/4	5/8	
	M19020	3/8	1/4	3/4	
	M17726	3/8	1/4	1	

Only AmeriServ supplies original **Starbide™** inserts, which have 16 identical cutting edges with an aggressive geometry for maximum material removal in the shortest possible time.

Our patented **Pentacut™** inserts are uniquely designed to maintain a consistent gage height no matter how they are applied.

The unforgiving **Raptor™** and **Talon™** inserts rip through downhole junk like buzz saws through butter, or so our customers say.

The innovative **Wave™** inserts are available in three different lengths, so all sides of a mill's cutting elements can be easily lined with the Wave's cutting teeth.

Synergy Carbide's engineered fishing and hardfacing products for dressing downhole tools are used to cut through steel casing and plugs and remove downhole junk. A variety of square, round, half-round, and polygonal inserts are available from stock, and application-specific insert geometries can be developed by our experienced engineering team to meet any requirement.

Our engineered products have advantages over traditional crushed carbide in downhole applications. The uniform shapes and sizes of our inserts, which are made from specially-formulated impact and wear-resistant cutting grades, ensure quick and easy application to the tool and reliable performance down the hole where it counts.

### HARDFACING PRODUCTS

composite rod and grit for cutting and wear applications

#### CrushCut™ Rod



#### CrushCut™ Grit



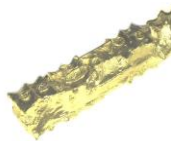
CrushCut Rod Part Number	CrushCut Grit Part Number	Particle Size (in.)
CCROD70-1018M	CC10-18	10-18 MESH
CCROD70-18116	CC18-116	1/8 X 1/16
CCROD70-31618	CC316-18	3/16 X 1/8
CCROD70-316316	CC316-316	3/16 X 3/16
CCROD65-14316	CC14-316	1/4 X 3/16
CCROD65-1414	CC14-14	1/4 X 1/4
CCROD65-51614	CC516-14	5/16 X 1/4
CCROD65-516516	CC516-516	5/16 X 5/16
CCROD65-38516	CC38-516	3/8 x 5/16
CCROD65-1238	CC12-38	1/2 x 3/8

### HARDFACING PRODUCTS

engineered rod for cutting applications

#### Starbide™ Rod

**NEW!**



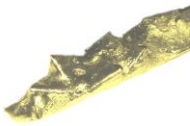
#### Pentacut™ Rod

**NEW!**



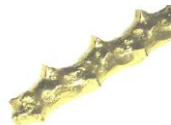
#### Raptor™ Rod

**NEW!**



#### Talon™ Rod

**NEW!**



Part Number	Insert Size (in.)
STARBIDE3/16ROD	3/16
STARBIDE1/4ROD	1/4
STARBIDE5/16ROD	5/16
STARBIDE3/8ROD	3/8
STARBIDE1/2ROD	1/2
PENTACUT3/8ROD	3/8
RAPTOR3/8ROD	3/8
TALON3/8ROD	3/8

#### Flux

High-temperature flux for nickel-silver alloys (RBCuZn)

Part Number	Form	Weight (lbs.)
FLUX43860	Powder	1
FLUX43001	Paste	1

#### Tinning Rod

Nickel-silver alloy for composite rod



Part Number	Flux	Dia. (in.)	Length (in.)
TROD1/8		1/8	36
TROD1/8C	✓	1/8	36
TROD3/16		3/16	36
TROD3/16C	✓	3/16	36

**CrushCut™** composite rod is cast in a nickel / silver matrix with a tensile strength of up to 100,000 PSI and is offered without flux in one-pound increments.

A 65/35 ratio of carbide to matrix is used for cutting applications, and for wear applications a 70/30 ratio is used.

**CrushCut™** premium grit is available in industry-standard sizes from 1018 mesh through 3/8". Sintered virgin tungsten carbide material is crushed and screened to ensure unmatched consistency.

**Starbide™** composite rod represents a breakthrough in downhole tool dressing technology. These rods consist of engineered tungsten carbide inserts made from a grade specially formulated to cut through casings, plugs, and downhole junk in record times.

**Pentacut™** composite rod employs the patented cutting technology of the Pentacut™ inserts to create a constant gage height regardless of the position the inserts are applied.

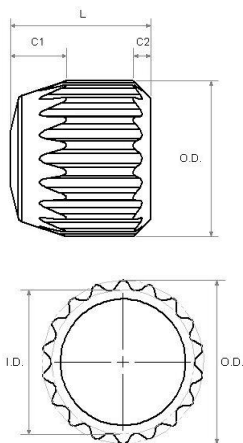
**RaptorRod™** and **TalonRod™** feature extremely aggressive cutting elements designed for optimum material removal.

Synergy Carbide offers Type B high-temperature flux, in powder and paste forms, tailored for use with nickel-silver alloys. Non-corrosive, washes away with water, and cleans contaminants on the brazing surface.

Our tinning rod comes bare or fluxed in standard sizes. Made from the same durable nickel-silver alloy used on all our composite rod products, from AWS and ASME class RBCuZn-D.

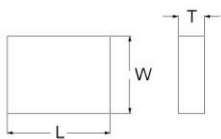
All gage and wear protection compacts and stabilizer inserts are produced in our standard grade, SC1010, which exhibits a good balance of the wear resistance and toughness essential for reducing wear on friction-heavy gage surfaces of rotary cone, diamond, and other bits. Rectangular stabilizers and round wear protection inserts are available from inventory in our standard grade, SC1012, specially formulated to enhance wear characteristics.

### Serrated stabilizers



Part Number	Dimensions (inches)					Model
	O.D.	I.D.	C1	C2	Length (L)	
M17745	.273	.242	.100	.031	1/4	
M17683	.334	.309	.059	.015	.145	
M17504	.334	.309	.059	.015	.200	
M17457	.334	.309	.059	.015	.268	
M10025	.406	.374	.125	.031	1/4	
M17697	.406	.374	.125	.023	.305	
M10040	.406	.374	.103	.031	5/16	
M10020	.406	.374	.125	.031	3/8	
M17519	.458	.418	.137	.015	1/4	
M17642	.458	.418	.137	.015	.348	
M17649	.458	.418	.137	.015	7/16	
M17420	.458	.418	.137	.015	.475	
M17580	.583	.551	.140	.015	1/4	
M17623	.583	.551	.140	.015	5/16	
M10038	.583	.551	.139	.015	3/8	
M10010	.583	.551	.139	.015	1/2	
SDS406438	.406	.374	.125	.122	7/16	
SDS583625	.583	.551	.139	.175	5/8	

### Rectangular stabilizers



Part Number	Length (L)	Width (W)	Thickness (T)	Model
TILE6.5X5X2	6.5 mm	5 mm	2 mm	
TILE13X5X2	13 mm	5 mm	2 mm	
TILE6.5X5X3	6.5 mm	5 mm	3 mm	
TILE13X5X3	13 mm	5 mm	3 mm	
TILE13X5X3.2	13 mm	5 mm	3.2 mm	
TILE13X5X4	13 mm	5 mm	4 mm	

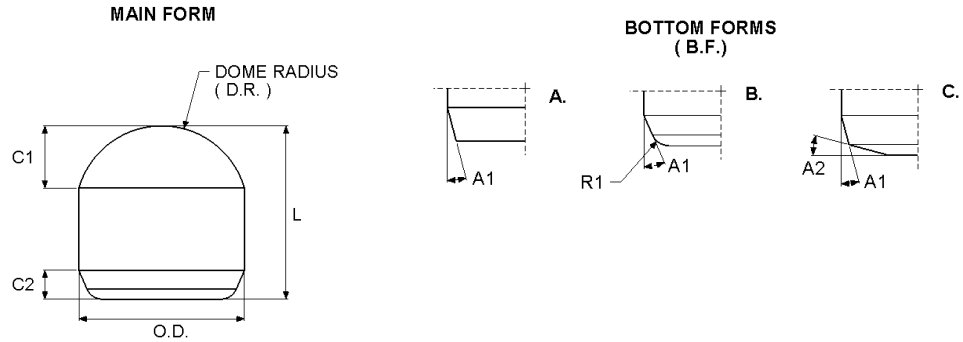
### Trapezoidal stabilizers

Part Number	Dimensions (inches)			Model
	Width	Thick. / Height	Length	
ANC803	3/8	1/4	1/2	
ANC804	3/8	1/4	1	
ANC9228	3/8	1/4	1	

### Half-round stabilizers

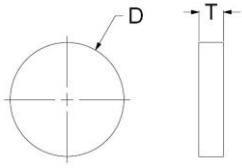
## Gage and wear protection compacts – ovoid

For use on downhole tools where domed gage protection is needed

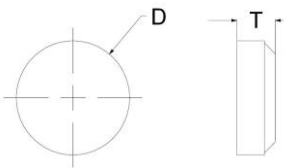


Part Number	Dimensions (inches)								
	Main Form					Bottom Form			
	O.D.	L	C1	C2	D.R.	TYPE	A1	A2	R1
M17521D2	.1900	.205	.074	.034	.102	B	23°	-	.020
M17521D1	.1915	.205	.074	.034	.102	B	23°	-	.020
M17521	.2020	.205	.074	.034	.102	B	23°	-	.020
M171821D1	.2500	.338	.081	.060	.141	C	15°	15°	-
M17545D6	.2510	.310	.076	.060	.141	C	15°	15°	-
M17545D1	.2515	.310	.076	.060	.141	C	15°	15°	-
M17303D2	.2520	.256	.083	.076	.141	C	15°	15°	-
M17545D2	.2530	.310	.076	.060	.141	C	15°	15°	-
M17645D1	.2535	.478	.076	.031	.141	A	45°	-	-
M17303D3	.2540	.256	.083	.076	.141	C	15°	15°	-
M17545D3	.2550	.310	.076	.060	.141	C	15°	15°	-
M17545D5	.2555	.310	.076	.060	.141	C	15°	15°	-
M17303D1	.2560	.256	.083	.076	.141	C	15°	15°	-
M17545D4	.2570	.310	.076	.060	.141	C	15°	15°	-
M17545	.2580	.310	.076	.060	.141	C	15°	15°	-
M17182	.2610	.338	.081	.060	.140	C	15°	15°	-
M17698	.2630	.248	.048	.076	.196	C	15°	15°	-
M17303	.2630	.256	.083	.076	.141	C	15°	15°	-
M17775	.2630	.266	.084	.055	.140	B	15°	-	.010
3816RB	.3810	.375	.133	.065	.203	B	15°	-	.020
M17275	.3850	.400	.129	.082	.203	C	15°	15°	-
M17728	.3880	.633	.156	.083	.194	C	15°	15°	-
M17737	.3950	.299	.145	.059	.203	B	15°	-	.008
M17738D1	.4390	.351	.162	.062	.235	B	15°	-	.010
4448RB	.4440	.500	.160	.089	.234	B	15°	-	.020
M17738D1	.4550	.351	.162	.062	.235	B	15°	-	.010
M17402	.5080	.542	.177	.076	.271	C	15°	15°	-
M17625	.5080	.585	.187	.105	.266	C	15°	15°	-
M17624	.5080	.614	.180	.105	.266	C	15°	15°	-
5698RB	.5690	.500	.212	.094	.297	B	15°	-	.040

## Round wear protection inserts



Part Number	Diameter (D)	Thickness (T)	Model
DISC240X200	.240	.200	
M17632	.245	.125	
DISC245X133	.245	.133	
DISC245X200	.245	.200	
DISC370X080	.370	.080	
DISC370X133	.370	.133	
DISC370X200	.370	.200	
DISC370X311	.370	.311	
M17804	.375	.125	
M17805	.375	.188	
M17806	.375	.250	
M17510	.375	.305	
M17648D4	.367	.125	
M17648D5	.367	.133	
M17648D6	.367	.188	
M17648D2	.367	.265	
M17648D1	.367	.290	
M17648D3	.367	.365	



## Our Mission

***We have a lifelong respect*** for the sacrifices our nation's military and first responders make to keep our country safe and free. It is the mission of AmeriServ Supply to support these heroes by donating a portion of our profits to charities benefiting these elite groups.

We take pride in making contributions to organizations like the Wounded Warrior Project, the Fisher House Foundation, and the Gary Sinise Foundation. Every dollar we earn means we're helping improve the lives of these amazing people. We sincerely appreciate you joining us in this effort.

